



Construction Method: **Horizontal Directional Drilling**

Project: **Gambell Water and Sewer Improvements, Chester Creek Crossing**

Location: **Anchorage, Alaska**

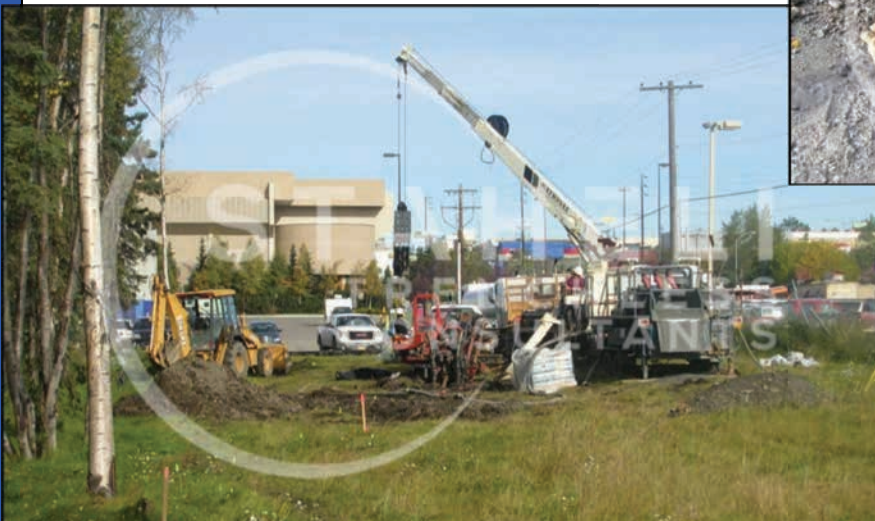
Job Scope:

- ❖ Feasibility Study
- ❖ Plan and Profile Preparation
- ❖ Contractor Submittal Review
- ❖ Specialized Construction Management

Project Description:

Staheli Trenchless Consultants completed a feasibility assessment and design for the installation of 620 feet of 11-inch HDPE pipeline under Chester Creek using HDD. The feasibility study included the review of existing geotechnical information and pre-design plans prepared by Steph Engineering, as well as site reconnaissance to evaluate the availability of staging and pipe layout areas for the project.

The design package included the identification of risks and challenges to HDD construction, loading, stress and hydrofracture analysis, pipe pullback calculations, project specifications, and cost estimates. In addition, STC reviewed constructor submittals and provided specialized inspection services during construction.



**Staheli Trenchless
Consultants**
ph: 425-205-4930
www.stahelitrenchless.com