

## Construction Method: Microtunneling

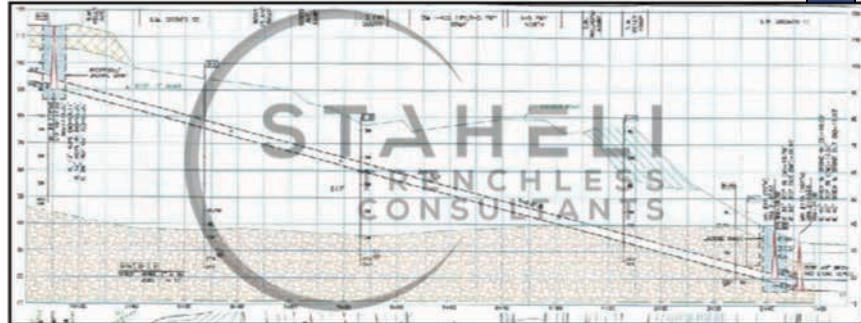
**Project:** Woods Trunk Sewer Replacement Project

**Location:** Portland, Oregon



### Job Scope:

- ❖ Geotechnical Baseline Report
- ❖ Plan and Profile Preparation
- ❖ Cost Estimates
- ❖ Design Calculations
- ❖ Contractor Pre-qualification
- ❖ Bid Services
- ❖ Specialized Construction Management



### Project Description:

This project started as an emergency repair of the Woods Trunk Sewer, but changed to a complete replacement when the costs and associated risks of rehabilitation grew too high. The existing sewer was located fifty feet below ground level in heterogeneous fill materials of variable origin and quality, and crossed underneath 5 significant roadways. Staheli Trenchless Consultants prepared a geotechnical baseline report for the project, and provided design services for the installation of an 817-foot long, 36-inch pipeline underneath Interstate-5 using microtunneling.

Pre-qualification of contractors was completed prior to bidding. Additionally, STC provided specialized on-site construction management for all tunneling operations, including data documentation to protect against claims.



**Staheli Trenchless Consultants**  
ph: 425-205-4930  
[www.stahelitrenchless.com](http://www.stahelitrenchless.com)