

# STAHELI Trenchless consultants

## Job Scope:

- ❖ Feasibility Study
- ❖ Technical Specifications
- ❖ Cost Estimates
- ❖ Plan and Profile Preparation
- ❖ Geotechnical Baseline Report
- ❖ Specialized Construction Inspection

## **Construction Method:**

**Open Shield Pipe Jacking**

## **Project:**

**Madison Valley Long Term Storage Solution, SPU**

## **Location:** Seattle, Washington

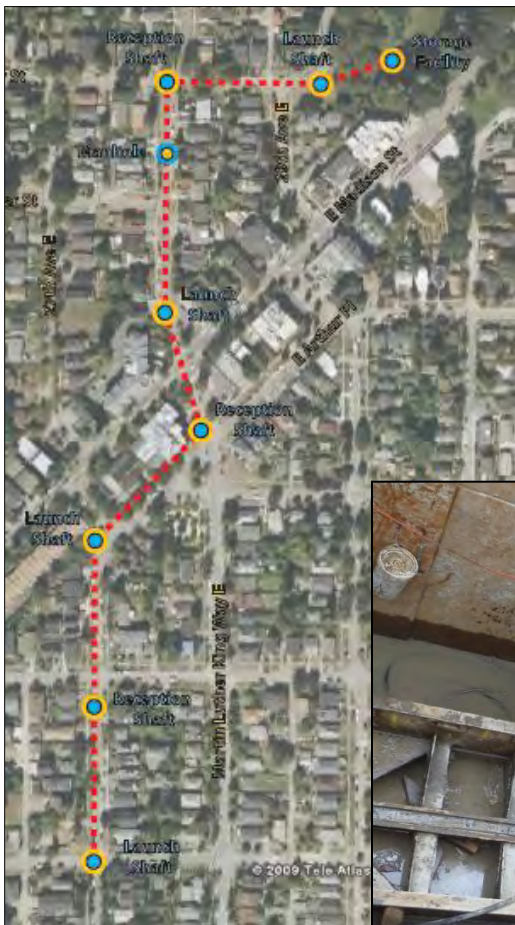
## **Date:**

**2009-2011**

## Project Description:

Staheli Trenchless Consultants provided design engineering and construction inspection services on 2,500 feet of 48-inch storm sewer through the Madison Valley district of Seattle. The project diverts stormwater flows from the northwest portion of the basin to alleviate flooding within Madison Valley.

Open shield pipe jacking at the 60-inch diameter was chosen as the preferred installation method. Creative equipment layout was required to facilitate shaft construction in congested neighborhood streets with narrow access and multiple businesses, spanning an affluent community located minutes from the shores of Lake Washington. The trenchless alignment encountered challenging geotechnical conditions including areas of contaminated soils, extremely glaciated soils, and a historic landfill and dump.



## Reference:

Glynda Steiner, Seattle Public Utilities (206) 684-3000.