

**Construction Method: Pipe Bursting**

**Project: Mercer Island Emergency Repair**

**Location: King County, Washington**

**Project Description:**

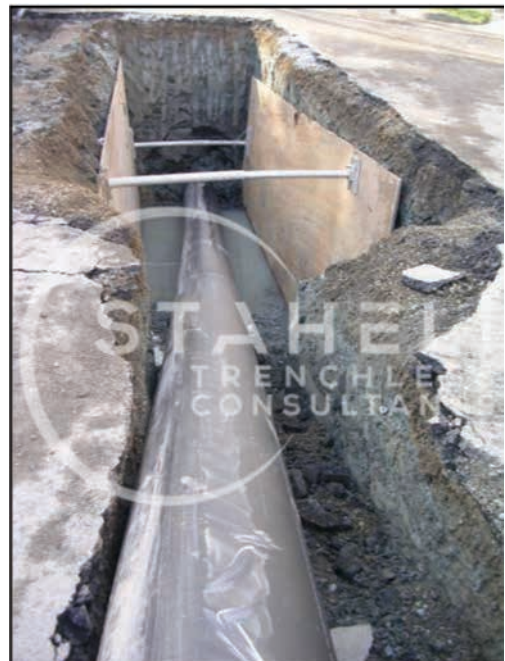
Staheli Trenchless Consultants provided emergency services for replacement of an 18-inch diameter fiberglass sewer pipe which failed in January of 2007. Bypass pumping was implemented while the pipe was inspected and replacement alternatives were considered. Pipe bursting was selected to minimize disruption to surface street traffic and residential access.

King County decided to replace the existing 1,850 feet of pipe with a 20-inch HDPE pipeline. Bursting layouts, pit locations and utility protection plans were designed on short notice, and project specifications were written. Additionally, STC provided specialized inspection services during construction. The entire project was completed in a little over a month.



**Job Scope:**

- ❖ Feasibility Study
- ❖ Pipe Burst Design
- ❖ Determination of Heave Impacts to Adjacent Utilities
- ❖ Plans and Specification Preparation



**Staheli Trenchless Consultants**

ph: 425-205-4930

[www.stahelitrenchless.com](http://www.stahelitrenchless.com)