



Construction Method: CIPP Lining

Project: Central Ave. S Pavement and Utility Improvements Project

Location: Kent, Washington

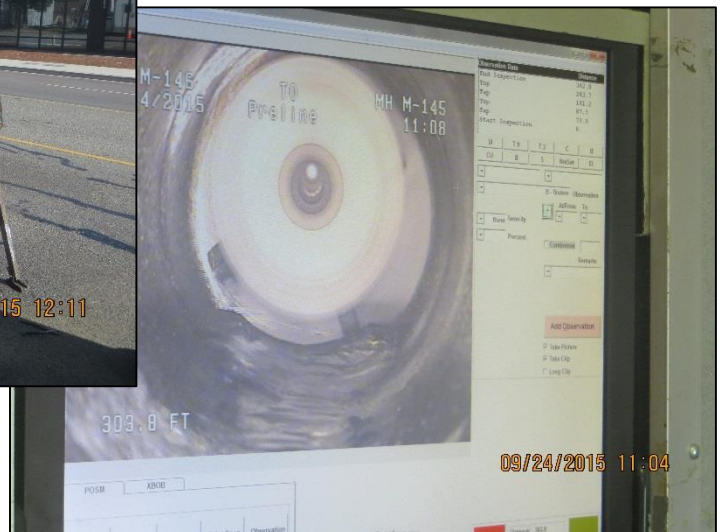
Date: 2015

Job Scope:

- ❖ Engineering Support During Construction
- ❖ Specialized Construction Inspection
- ❖ Post Construction Services

Project Description:

Staheli Trenchless Consultants provided specialty onsite inspection and construction engineering support for the rehabilitation of 81 sanitary side sewers and 8,600 feet of mainline sanitary sewer through Cured in Place Plastic Lining (CIPP). The rehabilitation included re-lining 8-inch, 14-inch, and 16-inch mainline sewers and re-lining 6-inch side sewer laterals for the City of Kent. STC provided full-time specialty inspection on the project, documenting all important events, recording temperatures the liner was cured at, and tracking which sewers have been rehabilitated. STC also assisted in post installation inspection through the viewing of CCTV and review of issues reports.



Reference:

Cameron Bloomer, PE, KBA, Inc.
206.819.7148